



HYUNDAI Technical Service Bulletin

Group	BODY ELECTRICAL
Number	08-BE-006
Date	AUGUST, 2008
Model	SONATA (NF)

Subject
NF XM SET TOP BOX DIAGNOSIS AND REPAIR

CIRCULATE TO:	<input type="checkbox"/> GENERAL MANAGER	<input checked="" type="checkbox"/> PARTS MANAGER	<input checked="" type="checkbox"/> TECHNICIAN
<input checked="" type="checkbox"/> SERVICE ADVISOR	<input checked="" type="checkbox"/> SERVICE MANAGER	<input checked="" type="checkbox"/> WARRANTY MGR	<input type="checkbox"/> SALES MANAGER

DESCRIPTION:

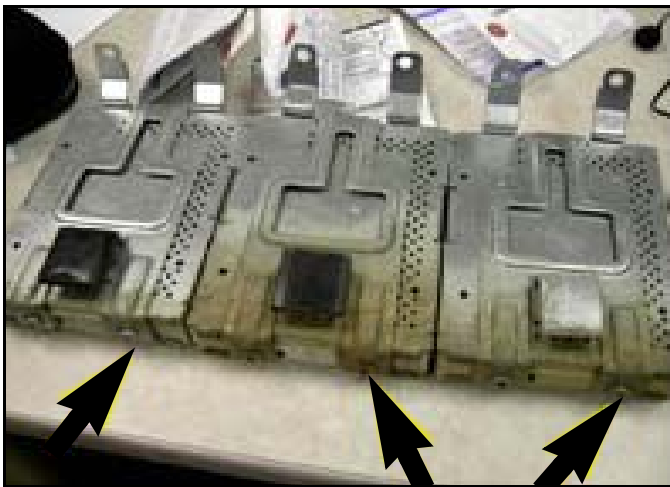
This Bulletin provides information on the diagnosis of an Inoperative XM Set Top.

Condition - XM Inop.

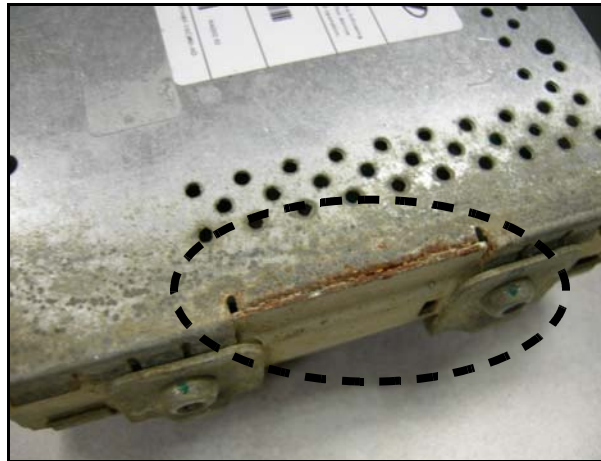
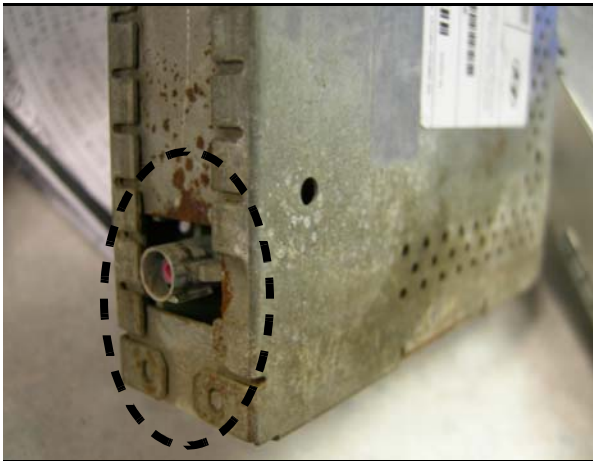
Vehicles Affected - NFA built after 15 Oct 06 until 2 Jan 08 equipped with XM.

PROCEDURE:

- A). When diagnosing a vehicle with an inoperative XM Set Top Box, check for water intrusion into the set top box.



Visible signs of water intrusion are normally at the bottom of the Set Top Box.



If no water damage is noted proceed with normal diagnostics. If water damage is noted then proceed to Step B.

B).

1. Remove Set Top Box

- a. Gain access to trunk and remove trunk pad/carpet
- b. Remove 2 mounting screws attaching set top box to the body
- c. Disconnect box from harness

2. Visually inspect body for signs of water intrusion.



HYUNDAI Technical Service Bulletin

Group

BODY ELECTRICAL

Number

08-BE-006



Without Sunroof or AMP



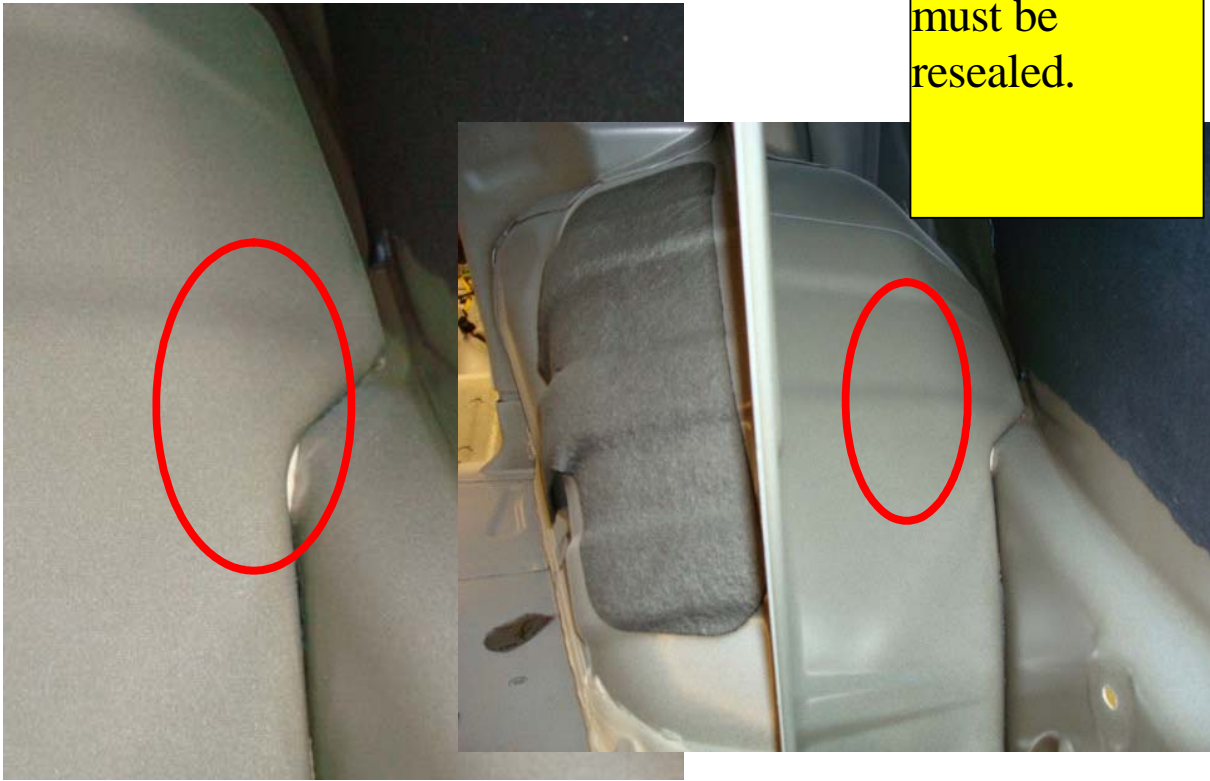
With Sunroof and AMP

3. Note that water may enter at body seams, screw holes, body plugs, or weld joints.
4. Reseal all joints and any other suspect water entry point with appropriate body sealer sealant.

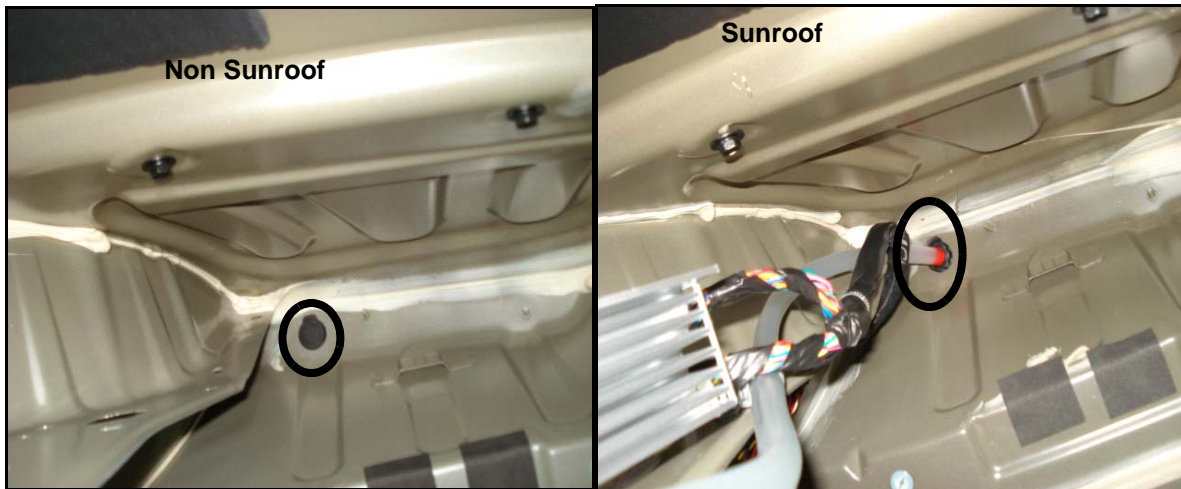


These joints must
be resealed.

These joints must be resealed.



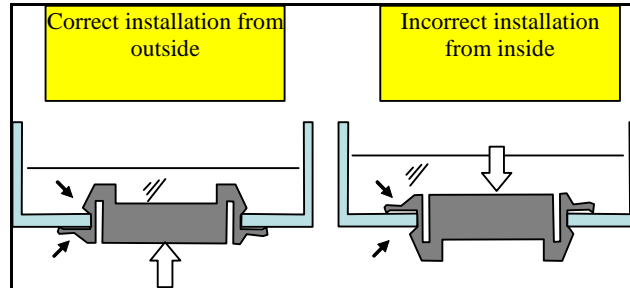
- 5. Inspect Non Sunroof Models drain plug for proper fit. Plug must be assembled from the outside of the vehicle.





HYUNDAI Technical Service Bulletin

Group	BODY ELECTRICAL
Number	08-BE-006



6. After resealing replace with new Set Top Box by reversing steps B 1 a-c.

Vehicle	Part Number	Part Description
NFA	96210-0A100	Set up Box

7. Inspect feeder cable for damage. If required, replace feeder cable using the replacement cable part numbers listed below.

Vehicle (Production Date)	Part Number	Part Description
NFA (1/11/07 – 12/17/07)	96220-0A102	Feeder Cable - SDARS
NFA (5/1/07 – Current)	96280-0A300	Feeder Cable - SDARS
NFA (12/17/07 – Current)	96280-0A350	Feeder Cable - SDARS

OPERATION CODE:

OP CODE	OPERATION	OP TIME	CAUSAL PART #	SUBLET COSTS	NATURE CODE	CAUSAL CODE	SUBLET CODE
96210F00	Set top box Replacement + Body Reseal	0.3 M/H	96210- 0A600	---	N90	C88	---
96210F01	Set top box Replacement + Body Reseal + Feeder Cable Replacement	0.5 M/H	96210- 0A600	---	N90	C88	---
96210F02	Set top box Replacement + Body Reseal + Wiring Connector Repair	0.7 M/H	96210- 0A600	---	N90	C88	---
96210F03	Set top box Replacement + Body Reseal + Feeder Cable Replacement + Wiring Connector Repair	1.0 M/H	96210- 0A600	---	N90	C88	---
96210RZZ	Sublet cost for Sealant	---	---	\$12.00	---	---	W3