

# Technical Service Bulletin

<b>Subject</b> <b>3.3L (NF) SONATA REAR SHOCK ABSORBER REPLACEMENT - SERVICE CAMPAIGN T28</b>		<b>Group</b> CAMPAIGN	
		<b>Number</b> 06-01-011	
		<b>Date</b> NOVEMBER, 2006	
		<b>Model</b> 2007 SONATA (NF)	
<b>CIRCULATE TO:</b>	<input type="checkbox"/> GENERAL MANAGER	<input checked="" type="checkbox"/> PARTS MANAGER	<input checked="" type="checkbox"/> TECHNICIAN
<input checked="" type="checkbox"/> SERVICE ADVISOR	<input checked="" type="checkbox"/> SERVICE MANAGER	<input checked="" type="checkbox"/> WARRANTY MGR	<input type="checkbox"/> SALES MANAGER

**IMPORTANT: DEALERS MUST PERFORM THIS CAMPAIGN ON ALL AFFECTED VEHICLES PRIOR TO CUSTOMER RETAIL DELIVERY.**

**IMPORTANT: WHEN A VEHICLE ARRIVES AT THE SERVICE DEPARTMENT, ACCESS HYUNDAI MOTOR AMERICA'S "WARRANTY VEHICLE INFORMATION" SCREEN VIA DCS ON-LINE TO IDENTIFY OPEN CAMPAIGNS.**

**DESCRIPTION:**

Some 2007 MY (NF) Sonatas may exhibit a clunking/thumping noise from the rear of the vehicle. This bulletin describes the procedure to improve the condition stated above, and the procedures to replace both left and right rear shock absorbers.

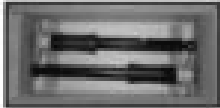
**VEHICLES AFFECTED:**

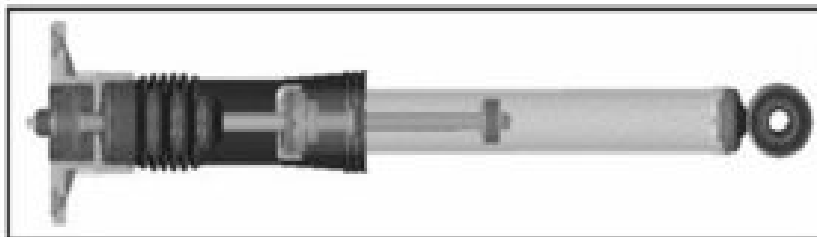
Model: SONATA (NF) equipped with the 3.3L V6 engine, dealer stock vehicles only.

Assembly Plant: HMMA (VIN starting with 5NP)

Vehicle production date range: Job #1 - 8/25/06

**PARTS INFORMATION:**

Part Name	Part Number	Picture
Shock Absorber Assembly (NEA RR S/ABS KIT (LH/ RH))	55305-3K251DQ0H	



## SERVICE PROCEDURE:

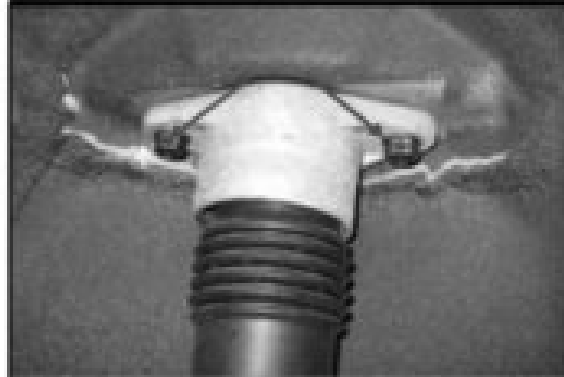
1. Safely raise the vehicle using a vehicle lift.



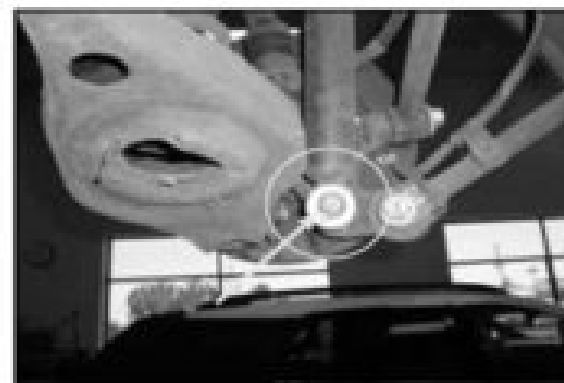
2. Loosen the rear wheel lug nuts and remove the rear wheels from the vehicle to gain access to the rear shock absorbers (both sides). Caution: Be careful not to damage the lug nuts when removing the rear wheels.



3. Loosen the upper shock absorber mount assembly bolts using a 14mm socket but do NOT remove completely at this time.



4. Loosen and remove the lower shock absorber mount nut and washer using a 19mm socket.



# Technical Service Bulletin

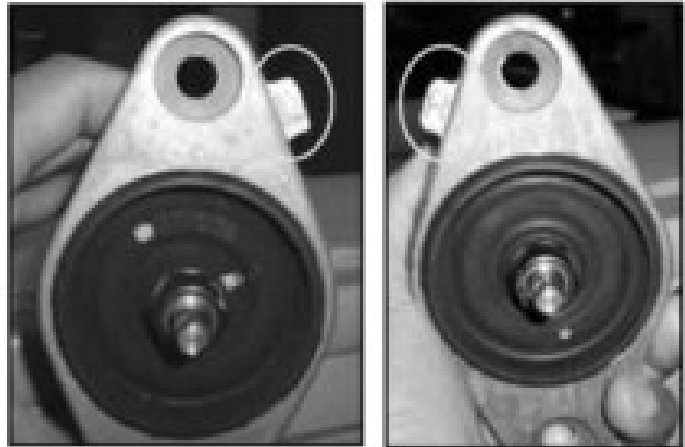
Group	CAMPAIGN
Number	06-01-011

5. Place a jack stand or transmission jack (as seen in this photo) and apply upward pressure to the lower control arm to relieve tension on the shock absorber.
6. Remove the two 14mm bolts that were loosened in step 3 and remove the shock absorber.

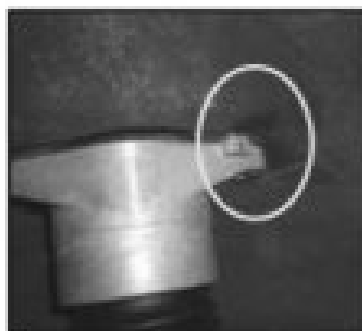


7. Install the new shock absorbers.

**NOTE:** The shock absorbers are labeled "L" and "R". Please make sure to install the shock absorbers on the correct side.



8. Insure that the "L" and "R" (Left and Right) tabs are facing outward (upper mount) and the knurled side of the shock absorber (lower mount) is facing inward (towards the center of the vehicle) when the shock absorbers are installed.



9. After the shock absorbers are installed with the upper bolts and lower nut tightened to the correct torque specification, as shown below, remove the jack stand or transmission jack stand installed in step 5.

Torque Specification: Tighten all bolts and nuts to correct specification:

Shock absorber upper mounting bolts: 36.2 – 47 lb-ft (50 –60 Nm)

Lower shock absorber mounting nut: 101.2 – 115.7 lb-ft (140 – 160 Nm)

10. Reinstall the rear wheels and torque the lug nuts using a 21mm Torque-limiting socket to the correct specification (80 lb-ft).



11. Lower the vehicle.

#### WARRANTY INFORMATION:

Op Code	Operation	Op Time
60B042R0	Replacement of both rear shock absorbers	0.5 MH

**NOTE: Submit claims using Campaign Claim Screen.**