



HYUNDAI Technical Service Bulletin

Group	BODY
Number	09-BD-002
Date	JANUARY, 2009
Model	2009 SONATA

Subject	2009 SONATA DRIVER SEAT COVER LOOSE
---------	--

CIRCULATE TO:	<input type="checkbox"/> GENERAL MANAGER	<input checked="" type="checkbox"/> PARTS MANAGER	<input checked="" type="checkbox"/> TECHNICIAN
<input checked="" type="checkbox"/> SERVICE ADVISOR	<input checked="" type="checkbox"/> SERVICE MANAGER	<input checked="" type="checkbox"/> WARRANTY MGR	<input type="checkbox"/> SALES MANAGER

DESCRIPTION:

- On some 2009 Sonata (NF) vehicles, the driver side seat cover may become loose at the left front corner due to the fabric's retaining clip (see photos below).



This bulletin provides the service procedure to secure the fabric's "J" clip to the seat frame.

VEHICLES AFFECTED:

Model: 2009 Sonata (NF)

TOOLS REQUIRED:

1. #34 Drill bit (2.81mm / .111")
2. #2 Philips screw bit
3. Measuring tape
4. Cordless Drill

PARTS REQUIRED:

QTY	PART NAME	PART NUMBER
1	SCREW - TAPPING	10188-05163

SERVICE PROCEDURE:

CAUTION:

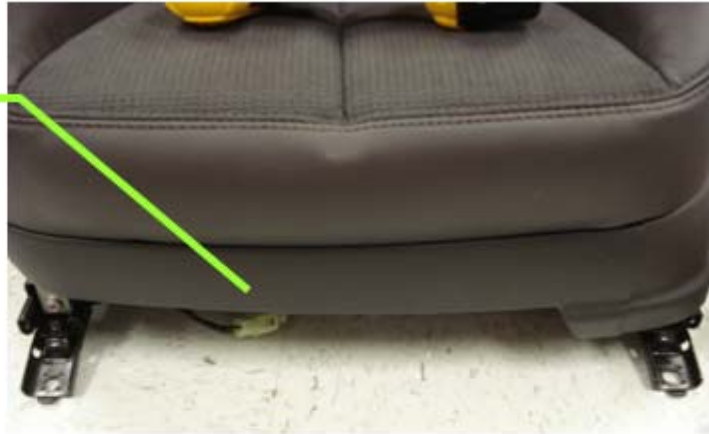
- Wear gloves for protection.
- Take care not to bend, scratch, or damage the trim pieces.



SERVICE PROCEDURE:

1. Remove the front shield(a). Starting on the inboard side, pulling the front shield forward away from the seat(b) by disengaging the fastener clips and the snap features on the front shield.

(a) Front Shield



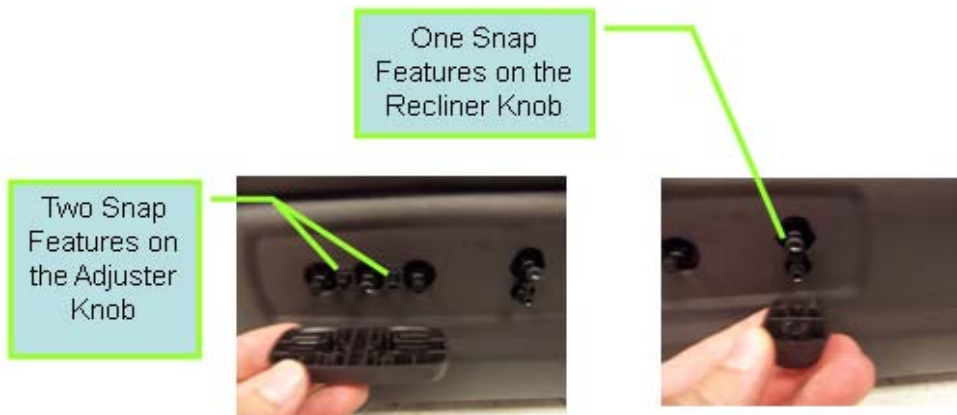
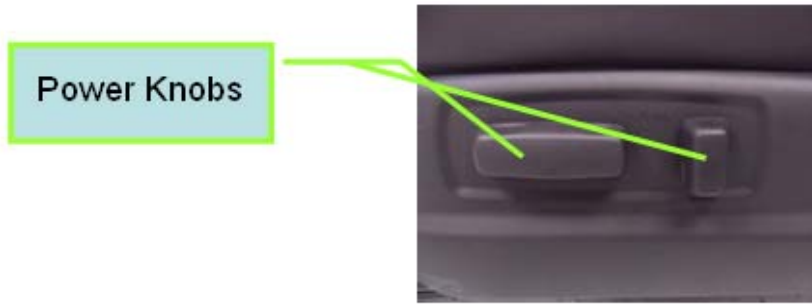
(b) Fasteners



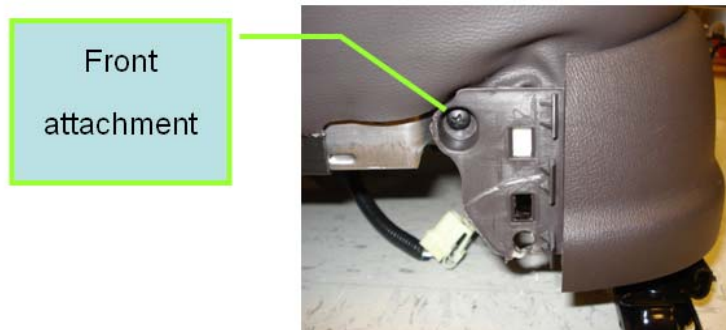
Front Shield



2. Remove power knobs. Pull both the adjuster and recliner power knob away from the side shield.



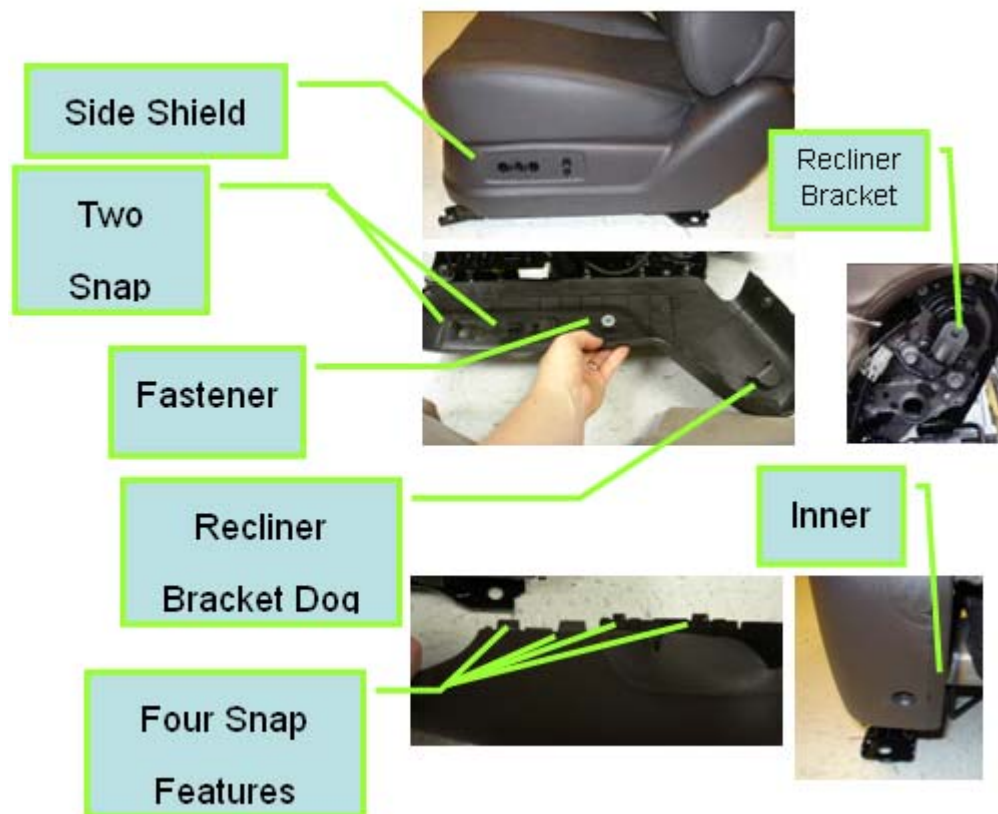
3. Remove the front and rear side shield attachment screws.





4. Remove the side shield.

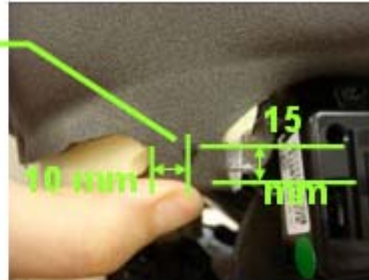
- Starting at the front corner, pull the side shield away from the seat, disengaging the two snap features on the side shield, then fastener.
- Disengage the 4 snap features at the rear located around the recliner from the inner cover.
- Once the snaps are undone, pull the shield up to slide the recliner “dog house” off the recliner bracket.



5. Attach J strip to cushion pan with the new tapping screw.

- Fold J clip back down to the correct installation position.
- Measure 10mm (3/8") left from the front edge of the clip and 15mm (9/16") up from the bottom.
- Mark location and make a pilot hole using a #34 drill bit.
- Insert new tapping screw part # 10188-05163 and **torque to 1.5-1.7Nm (1.1 - 1.25 lb-ft).**

Mark Pilot



Pilot Hole



Screw





HYUNDAI Technical Service Bulletin

Group

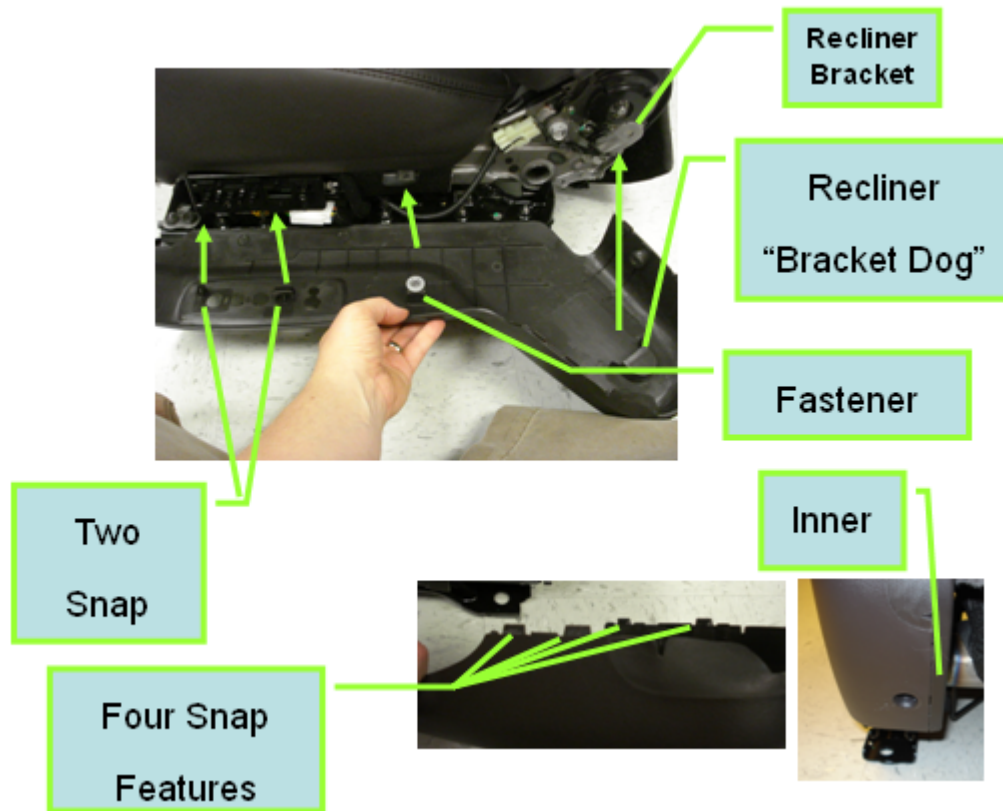
BODY

Number

09-BD-002

6. Attach side shield.

- Starting at the rear of the side shield, slide the side shield recliner “bracket dog” over the recliner bracket.
- Snap the 4 snap features located on the side shield into the inner cover.
- Snap the fastener and the two front snap features into the side member of the cushion pan.



7. Attach the 2 side shield screws.

- Tighten down the front and rear screw with a # 2 Phillip's tool bit and a cordless Drill.
- **Torque Value should be between 1.5 -1.7 Nm. (1.1 - 1.25 lb-ft)**

Front
attachment



Rear
attachment
Screw on Side





HYUNDAI Technical Service Bulletin

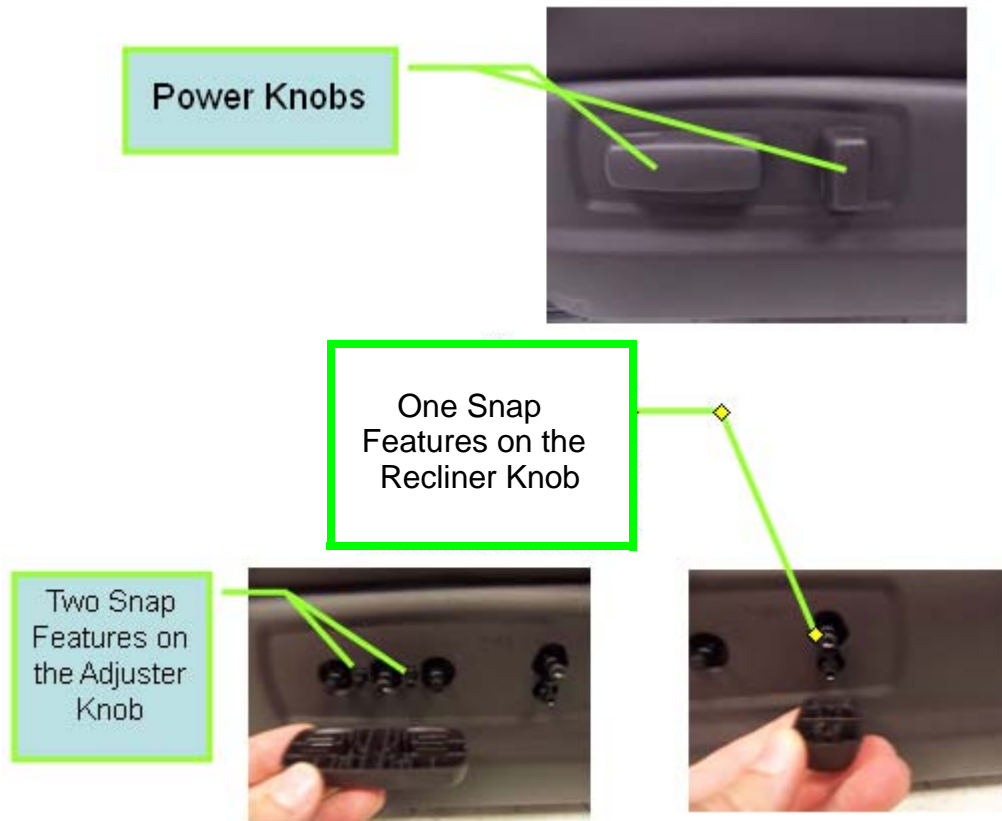
Group

BODY

Number

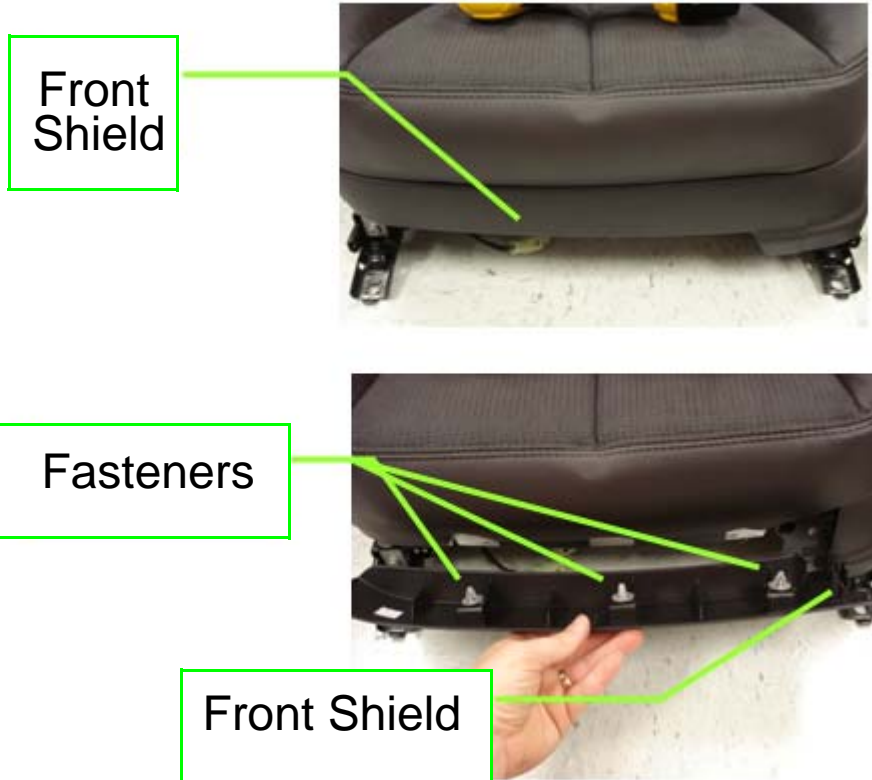
09-BD-002

8. Snap both the adjuster and recliner power knob to the power module's attachment feature.



9. Attach the front shield

- Starting on the outboard side, snap the two front shield snap features into the side shield.
- Then snap the 3 fasteners into the cushion pan.



10. Apply pressure to seat cushion and confirm seat cover fabric is tight and secure.



OPERATION CODE AND TIME:

OP CODE	OPERATION	OP TIME	CAUSAL PART NUMBER	NATURE	CAUSE
88160F01	Repair Seat Cover	0.2 MH	881600A150U7A	N86	C63